

Comparative Study

By Alma De La Rosa

In this comparative study I will be compare two art artwork of Frida Kahlo and two of Rene Magritte. I will focus and compare the formal qualities, such as brush work, shape, color, line and texture. As well as there artistic styes and the mean behind their work and how it connects to their culture. These artist mostly inspired/ influenced some of my artwork. The meaning behind each piece and what they are try to put out there inspires me to do the same thing. Both artist are from similar art movement . This comparative study will talk about the artwork and element in the piece of work and will be compared and analyze with supporting details.

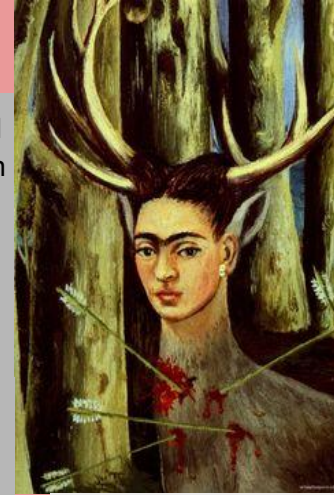
Evaluation of Cultural Significance of Frida Kahlo

Many people Surrealism, Art started in the being of early 1920's and is a well-known art movement for it's visual and creative artwork. Most Surrealism artworks express as a vision free or imaginative dream. Frida Kahlo was famous in the 1920's and is well-known for her Surrealism artwork, even though she does not consider her art work as Surrealism. Frida rose to fame because she was an artist and politically active. Her artwork rose for it appearance of something weird or out of its place. The style of Frida's artworks is a mix of Surrealism, Symbolism, Modern art, and Magical realism.



Portrait of Cristina
(1928)- Frida Kahlo

Many people have consider Frida artwork Surrealism as her artwork show imaginative dream or freely vision. She paints when she is in her feeling or to let her feeling go. It's to let her escape from her world or problems. Her weird/random artwork and this is how she grab some of people attention. She also grabed people attention by her marggied with Diego Rivera. She also stated that she was born 1910 because that is when the mexican revolution started and she said that because she want to start a new life/ being with the modern Mexico. She was also proud of her mexicanidad and cultural tradition. She had showed her proud in being mexican in some of her painting. For example painting "My Grandparents, My parents and Me. She show her Cultural in her painting. She was so influenced by her cultural, Which is why she used her bright colors in her painting. She also put her religious, Jewish/Christian into her painting to express her religious. She also painted about her family culture of European and indigenous Mexican identities. For example in her painting of The Two Fridas, one is wearing a white lace dress that is a traditional European dress as the other is wearing a traditional local dress in mexico .



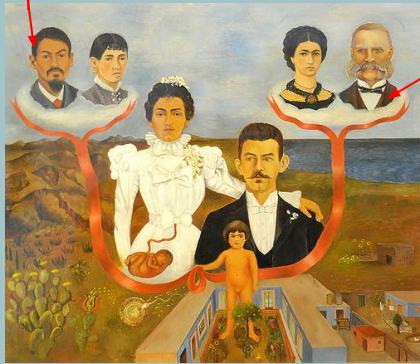
The Wounded
Deer (1946) -
Frida Kahlo

Analysis of Formal Qualities of Frida Kahlo

Light, Striking **Colors** are used to in Frida artwork to draw people attention. In these surrealism and symbolism style in Frida work include many **colors, lines, shapes value and light** in these works. All these elements play a role in her painting. Frida use bright warm **colors** to represent her culture in the painting. With these bright warm **color** and and dream like **shapes** bring a lot of attention into her piece. Her **Shape** in her piece are mostly dream like to create this surrealism/symbolism style into her piece. The **lines** in her piece are thin but also think in some place in the her piece. The value and light in here piece show more depth in here paintings for example Tree of Hope, Remain Strong has a lot of value and light, more like hue in the painting .



Tree Of Hope, Remain Strong-1946-Frida Kahlo



The way her piece are **balance** and detailed with colors is what Frida wanted to show, She wanted to show her feeling in her piece and at the same time express her culture. Her **lines** and **Shading** in her painting helps give it more **texture** to it. These texture gives the painting more depth and shows the contrast in her shading. The techniques she use to somewhat bring the her pieces to live with emonation, but then it doesn't because it bring that dream like start to them with many meaning into them. With her surrealism and symbolism style and techniques she used help her become well aware by the art community and help her with her success in her artwork.

My Grandparents, My parents and Me.-1936- Frida Kahlo

Interpretation of Function and Purpose

Annotation of “ The Two Fridas” (1939) By Frida Kahlo

Kahlo tends to use **balance** in most of her artwork for example in *The Two Fridas* display two Fridas, She painted herself two times because of her feeling alone she wanted to show herself in sorrow. The balance is her display on each side of the canvas. Giving it more attention from the audience.

Frida painted this at the time when she separated from Diego so she express her loneliness in it this painting. Her **color** show cold colors but a little of warm in them. The background of her painting show little **texture** and movement in them. The **colors** in the background makes the painting seem gloomy and the **colors** gives the painting a more detailed piece because of depth of the color and how they work together to bring this piece more alive and to bring attention into it. The body and face and cloths has more **form** and definition



This portrait of The two fridas was painted during the time her and her husband divorced and she. At this time she was feeling alone and sad to which made her make this piece. The contradictory in how Frida was painted as a symbolism/surrealism style to show her feeling in this piece. She use her self to express her memory of an imaginary childhood friend, but later on admitted in was to express her feeling after her husband and her got a divorce, maybe that is why she put a broken frida and a fix frida to represent her past and her future, this piece is more personal to Frida so it may have more meaning to it with symbolism.

The reason why the **Colors** are gloomy is because of her divorce with her husband.

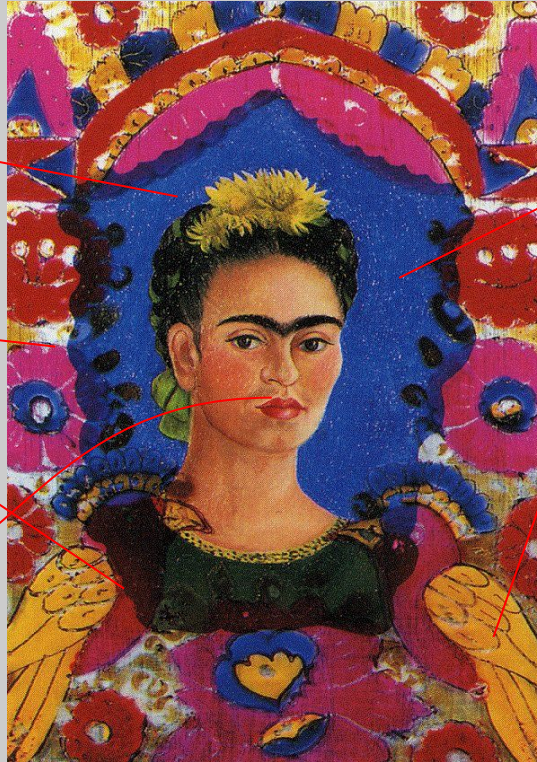
Kahlo, Frida. The Two Fridas. 1939.
Tue.5 Feb. 2019

Interpretation of Function and purpose

Annotation of “*self portrait the frame*” (1938) by Frida Kahlo

Bright **colors** are supposed to represent Frida culture. The bright blue in the background has little bit of **texture** and with the bright blue and pink helps the portrait bring attention in the middle. The **colors** in the background help make the middle stand out. The **line** in the background helps giving it **shape**, with thick lines making other image. The **shape** of the birds help blend into the background and the portrait itself as well.

There is **texture** in the painting as well as **shading** in the portrait of Frida as you can see the side of her face is darker. This gives the piece a more of a realistic style.



In the portrait of Frida she may have been experimenting with mixed media as the blue in the portrait in the piece is painted on aluminum, also the birds and flowers in the painting are painted on the backside of glass that is laying on top of the main portrait. This portrait was painted during her time she was with her husband. She used these warm and cool colors to express her feelings towards her husband. Also this may have been Frida's first mixed media.

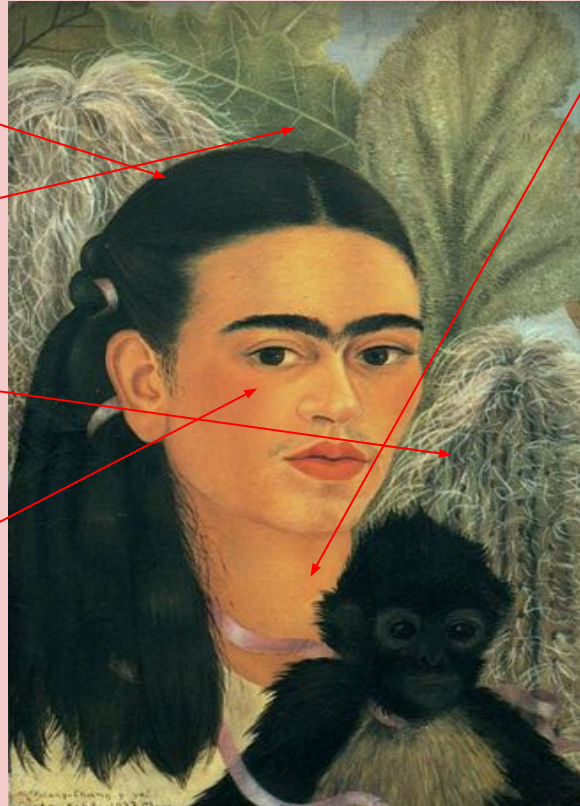
In her culture the food, clothes, and etc are seen as bright colors, because it is supposed to represent the lively and warm in her culture that is why in some of her artwork have bright color such as this one.

Interpretation of Function and Purpose:

Annotation of *Fulang-Chang and I* (1937) By Frida Kahlo

There is **proportion** and a little bit **balance** show in the background . The **colors** that Frida used are mixed with cool and warm but it also gives this gloomy/realisms vibes to it. Also Frida uses thin and somewhat thick **lines**. To help some of the images have more depths to it is well, having **texture** to it

She also uses **Shapes** to help out with the balance in this portrait, as well as shading to have this piece look more realistic and to help it get volume, but she also blends to get those **shading** to like the painting is alive.



In this painting Show Frida and her pet Chang. It is stating that “ many people believed that the monkey represent surrogate of an unborn child as Frida and her husband Diego could not conceive a child.

This painting was the first painting Frida have ever created with her pet in it. As this paint was held in a major exhibition and was commented as a surrealism piece, Frida took that to hear and stated that she does not paint Surrealism piece, She paints what is real to her.

When looking at her artwork, you are able to sense that it is a surrealist piece, even if she doesn't think it is As she may have saw surrealism as something else or normal to her.

Evaluation of Cultural Significance of Rene Magritte

Magritte is from the art movement of Surrealism, Dada, Post-impressionism. Magritte would try to avoid the expressive distractions of most modern painting as he wanted to do something different/mysteries. He wanted to show that his paintings are unique and are different from other artists. Other Surrealists used and experimented with new techniques, but Magritte wanted to stay on an impassive illustrative technique that clearly expresses the content of his pictures. Magritte often uses **repetition** in his work.

His interest for repetition may have come from Freudian psychoanalysis, as it is stated that repetition is a sign of trauma. Magritte may have wanted to express his trauma in his paintings that show repetition, as there are many in his paintings. Also, Magritte was fascinated by the communication of textual and visual signs, and some of his most famous pictures employ both words and images.



The Pleasure Principle
(1937) By Rene Magritte



The Lover (1928) By Rene
Magritte

While his artwork often expresses/shows a mystery and unique characterizes much of his Surrealist work, it shares a meaning and has a while of expression of misunderstanding to them or confuses. It is stated that "his motivations or influences for his paintings were artist, friends, and art movement." All thought his artwork are some element of realism in his painting, there are still some Surrealism to it. His artwork can sometimes feel like a nightmare or a riddle as they do make sense to people, but behind those unique images are meanings behind them. Most of his artwork has a meaning or a unique image to it, which causes it to have a Surrealist touch to it.

Analysis of formal qualities of Rene Magritte

Magritte was delighted by connecting the textual and visual signs, as some of his famous work both can express images and words to them. It is stated that "His artwork can show a hit of mystery and unique characterizes, for example his Surrealist work." His position of his work shows objects that are presented in his artwork that have **meaning, transformation, Repetition** and any more. He doesn't use bright colors that much as most of his artwork show a more realistic colors for example: light warm and cold colors to make the painting look real but not at the same time as the images of his painting show a mysterious and dream like image.



Golconda (1953) By Rene Magritte

Rene Magritte uses a lot of **positive and negative space** in his artwork. When it comes to the use of **negative space**, Magritte will express **negative space** by using illusions or a creation of an images with the negative space itself, with this it will give the painting more contrast or giving a an object more attention to it because of the negative space. He will also use repetition, such as shapes or colors to create rhythm and pattern in his artwork, he mostly use repetition. he also creates a sense of harmony that can make a painting final or united. He would also use value to help give the colors with value a more depth to his painting.



The familiar Objects (1928)
By Rene Magritte

Interpretation of Function and Purpose:

Annotation of *The Son of Man* (1946) By Rene Magritte

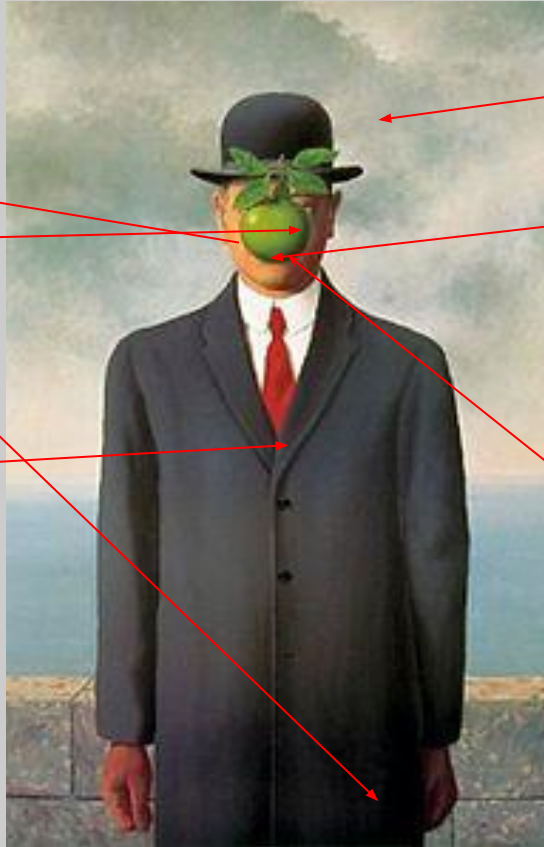
In this painting there is a man in the centered in Rene Magritte work and there is a apple/pear in the man face to help attract attention towards the man, in the paint an eye is sticking out near the apple/pear

Magritte used **value** to give this painting shade and somewhat help it give it **Texture**. The shading give this little stipels texture to the suit

Magritte uses **color** to help the shading give it a more realistic view to the painting.

When looking at the painting, it gives this mysterious feeling, because of the color and the object in the painting.

When looking at this painting you can see how the colors help create fine details and value



There is also texture in the cloud with Shading as well to help make the clouds look real/ having a form.

He also uses emphasis in his work, as well people looking at this painting the look at the pear first since it is in the middle and it sticks out the most from the painting. And because it's in the air.

In Magritte painting, he has many objects that stick out in his painting so people will look at that first. In doing this help people be attracted to the object, being strange.

Interpretation of Function and Purpose:

Annotation of *The Pilgrim* (1996) By Rene Magritte

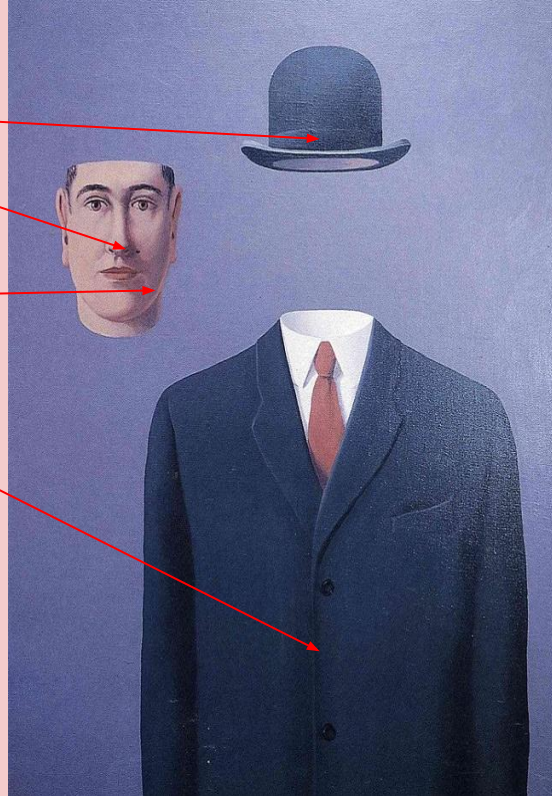
In this painting there are Line and the contrast. As well as shape

As well as **texture** in the paint.

When it comes to **texture** to this painting the **Shading** part helps define the **texture** and helps the shading part stand out more .

The background is a simple **color** which helps the main image stand out more As the color is a somewhat dark but also light and helps the dark color stand out more. As well as the suit has that bright white helps the middle to stand out more with the dark the red tie as well.

When looking at the painting the line work are thin to help show less line work or to help colors stand out.



Magritte likes to experiment with new techniques and methods, for this painting he settled on a deadpan, illustrative technique that clearly articulated the content of his pictures.

An amazing oddity is the regularly the aftereffect of the illustrative nature of *The Pilgrim*. He was great at making painting that incite agitating contemplations regardless of them being excellent in their straightforwardness and clearness.

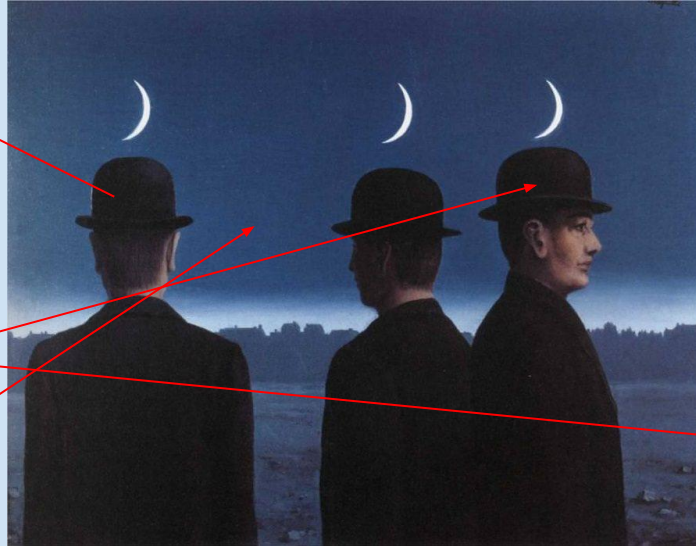
In most of his artwork have a repetition to it, this may have come from Freudian analysis.

Interpretation of Function and Purpose:

Annotation of *The Mysteries of the Horizon* (1955) By Rene Magritte

In the painting *The Mysteries of the Horizon*, Magritte uses repetition in this painting.

He also has texture in this painting. The most texture is the ground in the background, as he adds details by adding rocks to make it look like it has texture to it. Magritte also uses **shading** in the painting to have a **contrast shading** on the objects and in the sky as there is a dark blue mix with a light blue to make it look like a horizon at night or morning.



Magritte implies that regardless of how sensibly the craftsman can delineate a thing, verisimilitude is as yet an imaginative system, a negligible portrayal of the thing, not simply the thing.

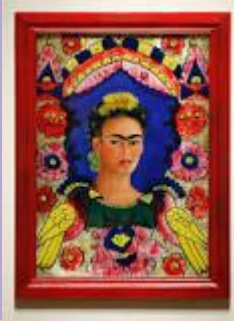
Crafted by Surrealism highlight the component of amazement, unforeseen juxtapositions, and the utilization of nonsensical conclusions.

Some saw their specialty as a declaration of a philosophical development that was committed to progressive change. Men in bowler caps have showed up every now and again in Magritte's work since his 1926 painting *The Musings of a Solitary Walker*. They are spoken to as having vague or indistinguishable characters.

Comparing Meaning Between Artist

Both:

- Both are in the surrealism movement
- Use fine details in three piece with many symbolism to it.



Frida Kahlo

- Express here culture in her piece with colors
- Also paints her pains and frustrations
- When painting she think about what a woman is.

Both:

- Uses symbolism in their painting to express there feeling or thoughts.
- Having depth of loss or sadness to some of their artworks.
- Both having repetition in their painting to express there feeling or to express as sadness

René Magritte

- avoided the stylistic distractions of most modern painting.
- Repetition show symbolism but sometimes have different meaning to it.
- His ideas may have come from Freudian psychoanalysis.
-

Comparing Art Styles

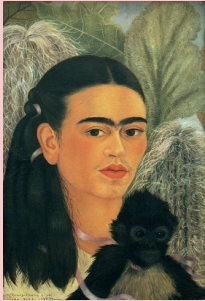


Frida Kahlo	Both	Rene Magritte
More realistic but also surrealism.	Symbolism in the both painting	Bright colors mix with dark colors.
Light and medium colors	Share surrealism objects and meaning.	Use repetition because of Freudian psychoanalysis.
Paints her pain and frustrations into her painting	Having lines and shading give it realistic details	Using more of a cold color as gloomy but still that light color in his piece
Using animals in her paintings to represent something	Having meaning in color	

Comparing Use of Line Between Artist

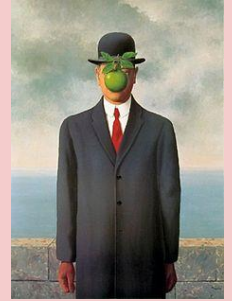
Both

- Both have lines that help creating clean details and good movement.
- Help present a contrast artwork.
- Helps makes the artwork look realistic
- They use subtle color lines



Both

- Being able to use line in order to create image as well as surrealism images.



Frida Kahlo

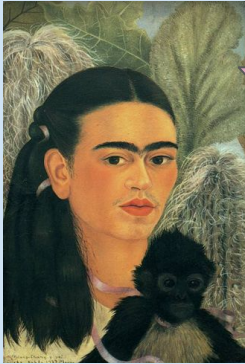
- Lines that are light and little thick
- Little lines help gives some shading
- Line lines help create depth and detail.

Rene Magritte

- Thick, dark lines helps giving pages realistic look
- Thick lines help the coloring and shading stand out.
-

Comparing use of colors between artist

- Takes advantage on using value to help the painting have more details
- Colors help give the painting a sense of realistic but also unrealism
- Use cold but sometimes warm colors in their paintings.



- Both
- Being able to use color in order to create a mood or feeling to the piece



Frida Kahlo

- Use color to express her culture
- Uses light to make the dark/middume background stand out from the painting.
- Use colors to express her feeling(some can seem happy while others seem gloomy)

Rene Magritte

- Use dark colors to show fine detail
- Used light color to help stand out from the rest of the colors
- Blends light colors and dark

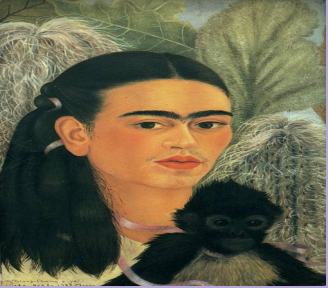
Personal Art vs. Frida Kahlo

Similarities in both work

- **Balance** in both works being able to **create this somewhat symmetrical balance to it**
 - The use of warm but little bit of cold **colors**
 - Connecting to **culture** of hispancan and meaning to it.
 - Using **thick and thin lines** in order to create details
 - The use of **Hue** in order to create **shadings** with **colors** and being able to also create **highlight**.
 - **Background**
 - both paintings being self portrait not me but my cousin
- The **background** both being gloomy and dark
 - The **layout** both being **balanced** and well even
 - The heart being broken and being connected to another one similar but with different meaning in them. Both have personal connection, but as my have a more meaning then a symbol.
 - balance in both paintings
 - colors (such as bright warm colors) having it relate to our culture
 - the layout having it o

Differences in my work

- The color used
- the Hue/value
- Frida artwork has fine details
- Frida is well blend

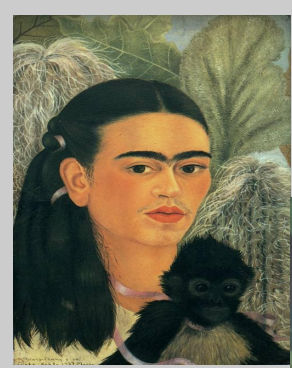


Meaning, technique

When looking at my piece and looking at Frida works and being able to see the Colors being similar, being able to hold meaning to them as bright colors can connect to them being warm. Most of my works are cold colors having the meaning with of lost, confused and past time. While looking at Frida work, her work consisted of warm and cold colors but mostly warm color. The meaning for My warm colors are for my culture as in my culture has many bright colors.

As for Frida, her reason for using Warm and bright colors are similar to my as we both are from the same culture and being able to connect to bright contrast colors in out piece to represent our culture. While Cold color many mean pain or something that had in the past, Frida Connect her cold colors of traumatic things that happened to her. When looking at Frida technique of using symbolism in her work, and being able to express herself of things she see real to herself.

Having able to connect to her culture and pain or happiness. In Her work having many symbols that can connect to herr, as for I with the symbols in m work are mostly thing that can represent something in my life there are thing that have happened in my life that are in one of the work that was inspired by Frida and that isn't surreal.



Personal Art vs. Rene Magritte

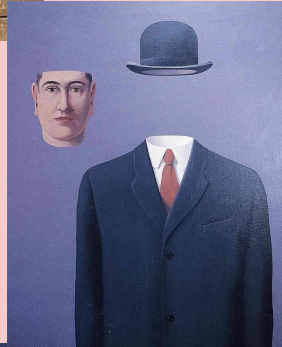
Similarities:

- balance in the layout being able to have a well balance work with less or images
- Similar symbolism in each artwork
- Work of Surrealism and many symbols and meaning in each work
- Utilizing thick and slim lines so as to make subtleties
- The utilization of Hue so as to make shadings with hues and having the option to likewise make feature. repetition

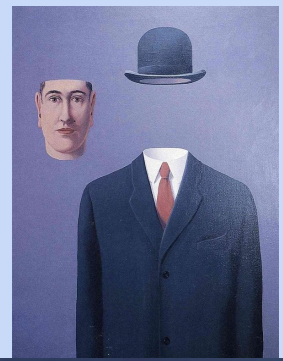
- Differentiation of surface and additionally hues in the two pieces
- Having an incentive with hues having the option to express with shading and having the option to make fine subtleties

Differences:

- There is words in my piece and not in the having different meaning to them
- The colors as my have less color to them
- lines and shapes in the piece
- in my piece I use more of a female view.



Meaning, Technique,



Having the option to express the vibe of what is genuine and what isn't, when investigating Rene Magritte work, leaves a few or the vast majority befuddled. When taking a gander at piece that have a remarkable look to them can make thoughtfulness regarding the craftsman or piece. When made my pieces I needed to place significance into my piece with numerous images yet additionally leave them inside befuddled. Being able to create a piece with meaning to me and being able to have people see it different from what I see. Looking at Rene piece and having the repetition in since work Reiteration was a significant procedure for Magritte, illuminating not just his treatment of themes inside individual pictures, yet in addition urging him to create numerous duplicates of a portion of his most noteworthy works. When looking at my work I create repetition for a meaning to connect to my theme as well to help/ encourage me to create a piece that is important to me.

Connection (Emphasis on color Subject and Portrait)



When taking a gander at my work, Frida Kahlo and Rene Magritte, and taking a gander at the suspect of befuddled into our tranquility and associating it to imagery and importance. When taking a gander at "The Two Frida" and taking a gander at my "broken heart and Healing Heart" and having the option to see the similitudes and however both having distinctive importance yet making this feeling of agony yet trust into.

When taking a gander at Rene Magritte "The Son of Man" and my Piece "The Truth" and having the option to associate with the worth and comparative pictures, being to have comparative Shapes, however both having diverse significance to them.

When Looking at Frida piece "self representation the edge" and Looking at my piece Maya, both piece containing brilliant hues to speak to the way of life and having the option to imagery of our way of life.

Rene Magritte piece "The Pilgrim" and my piece "Don't please" interface by states of the line work and the incentive from both piece.

Topic having the option to confounded and outperform the mean of what is genuine or a fantasy inside imagery and importance to them. While making new work, I need to have an interface with my motivation and having the option to comprehend what the craftsman are attempting to express.

